

Trace onto a double
Layer of muslin

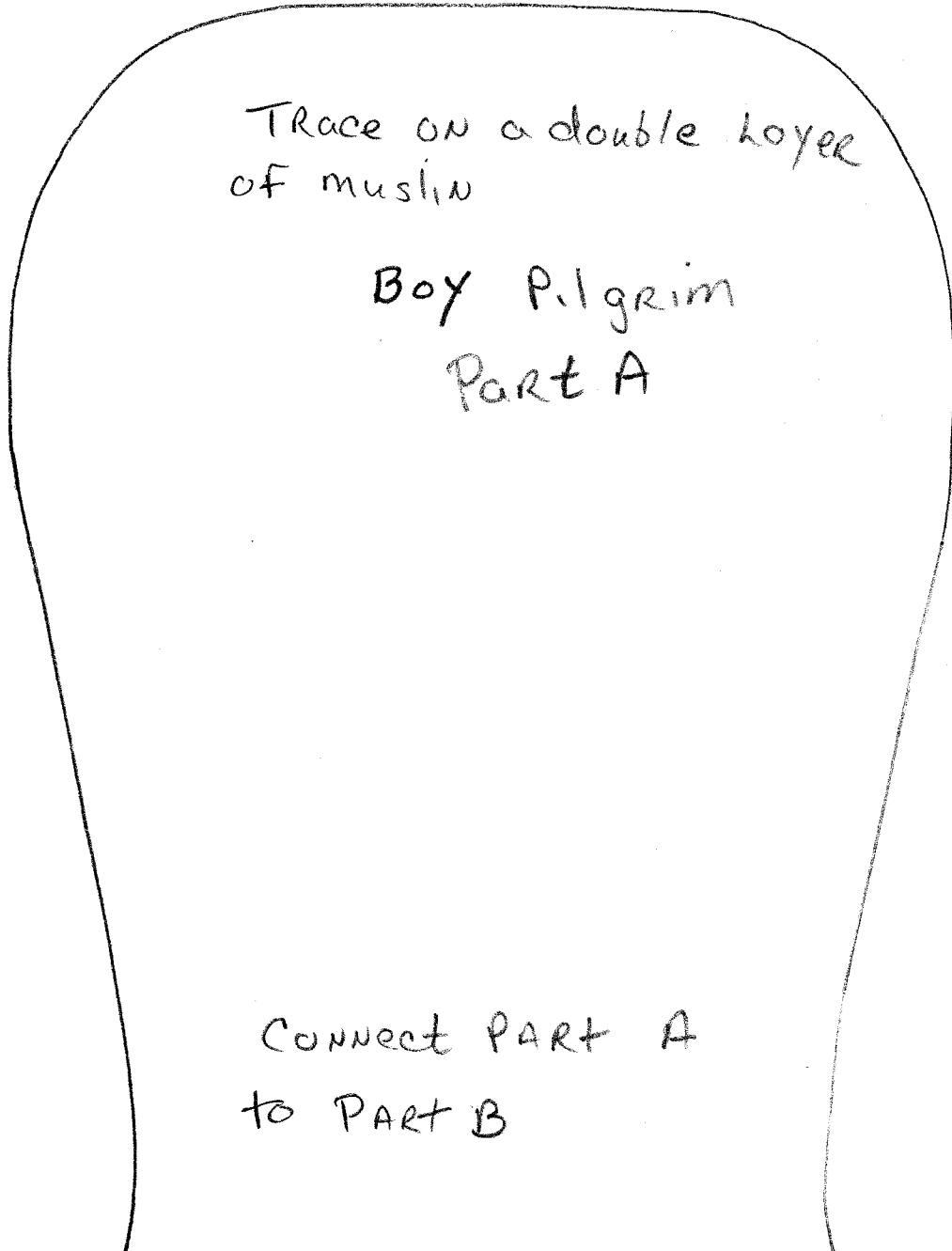
Girl Pilgrim

PART A

Attach Part A
to Part B here



Girl Pilgrim



Trace on a double layer
of muslin

Boy Pilgrim
Part A

Connect PART A
to PART B

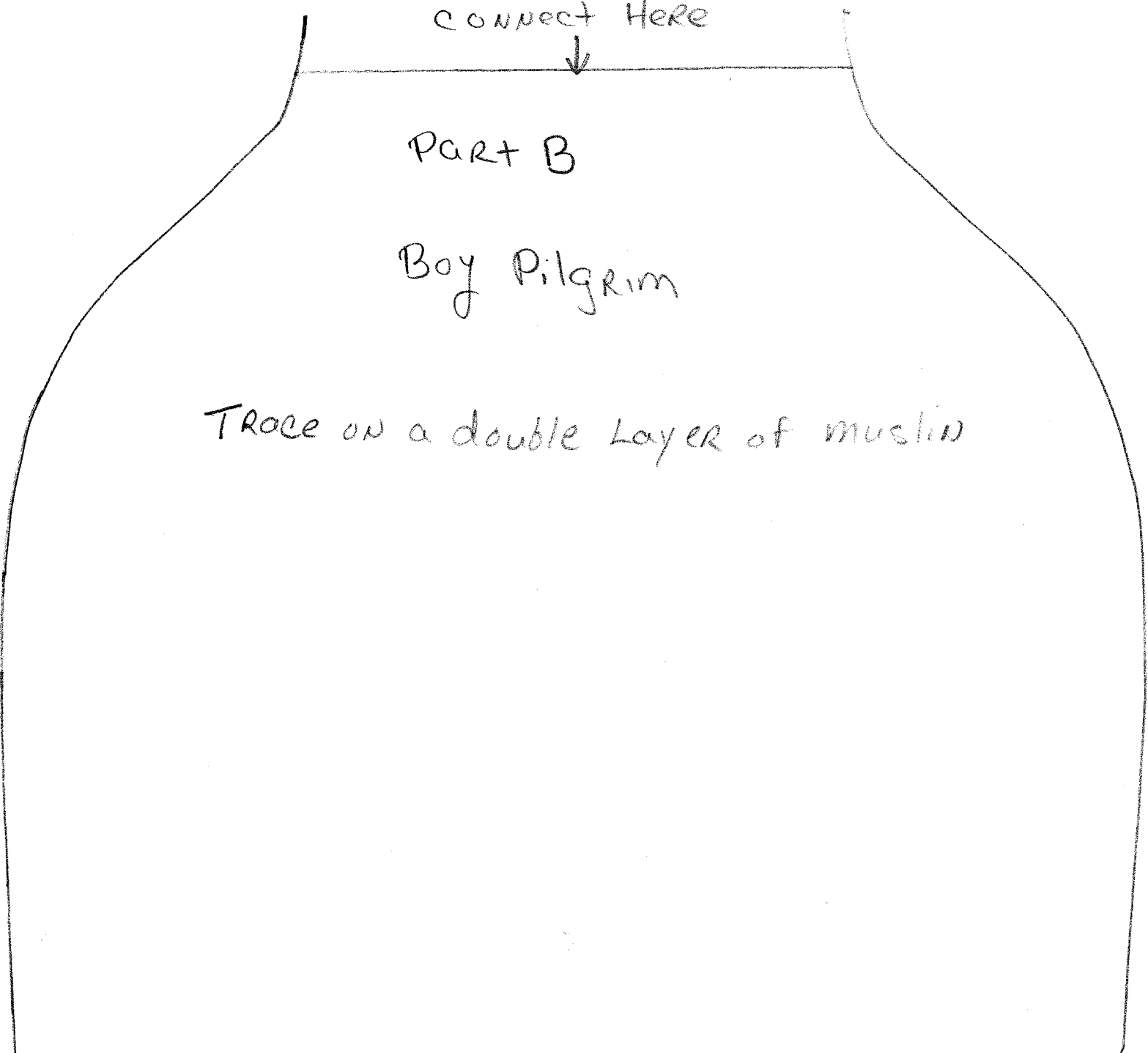
CONNECT HERE

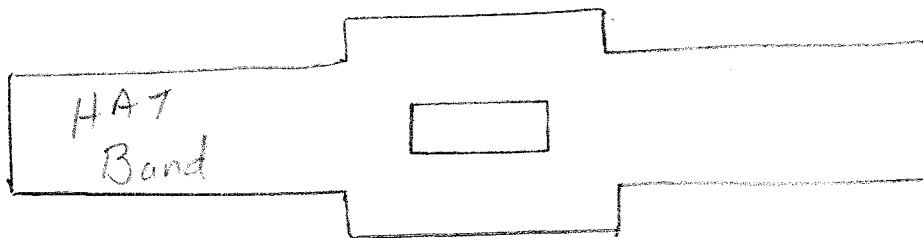
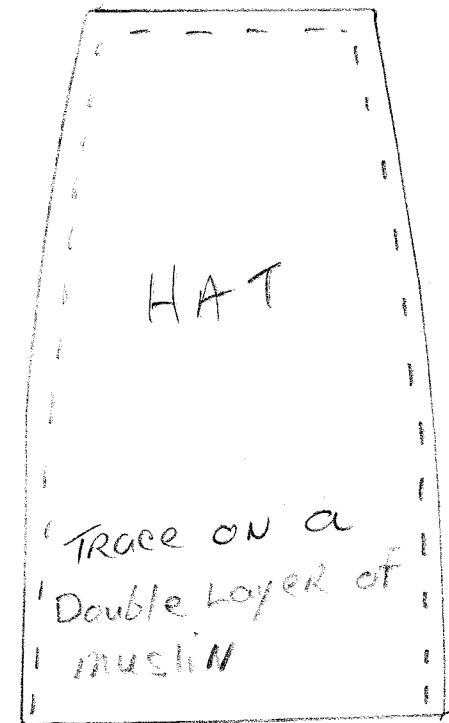
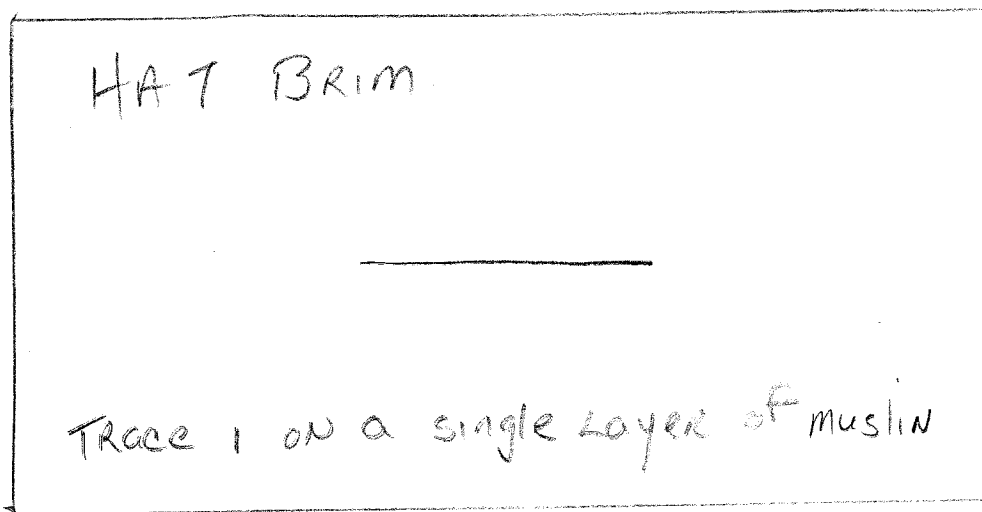
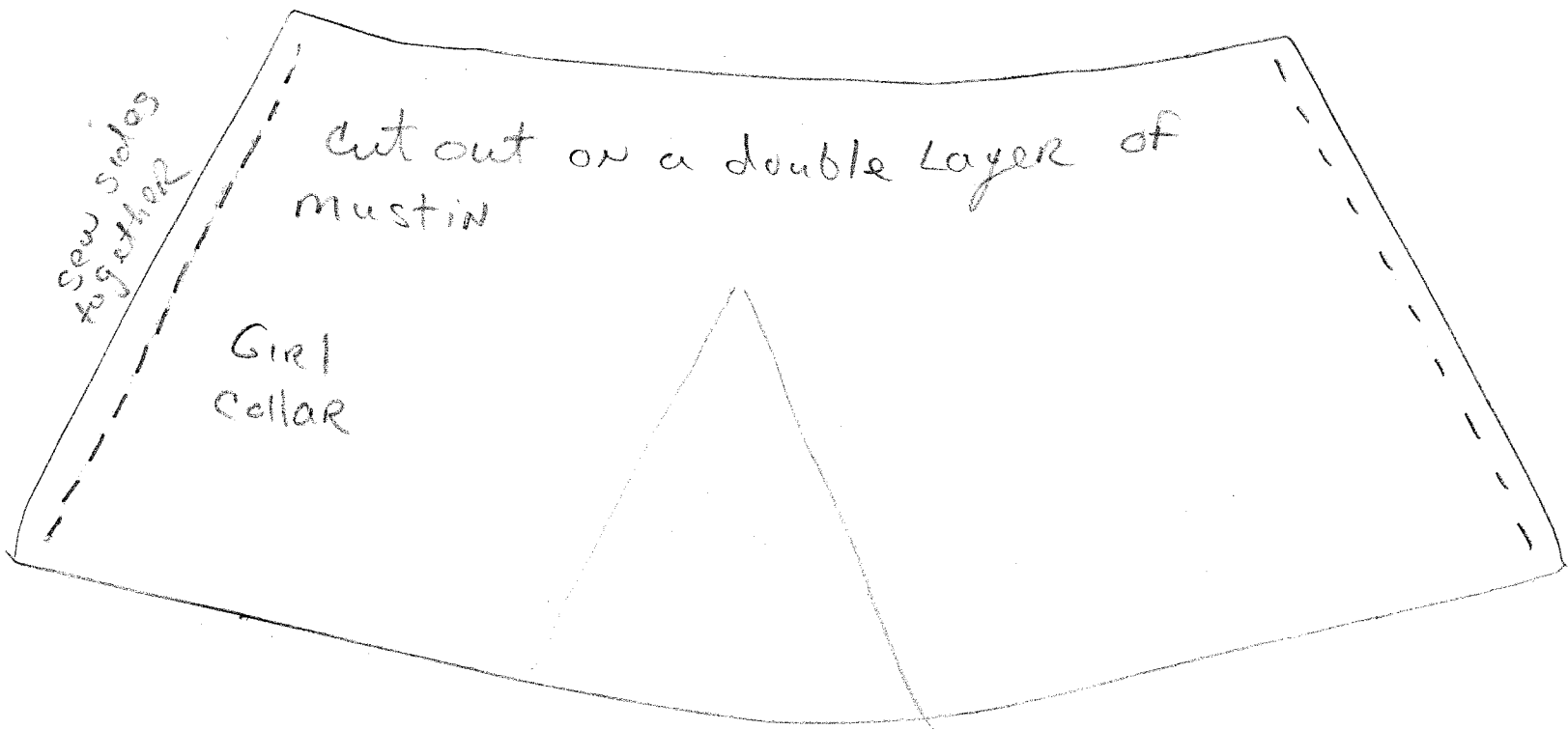


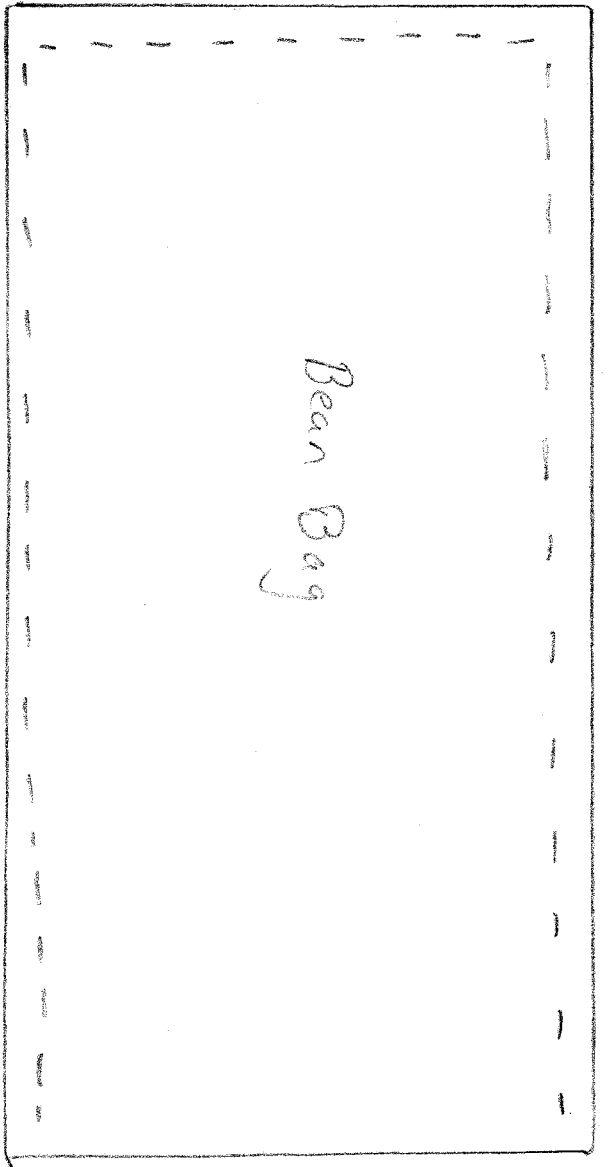
PART B

Boy Pilgrim

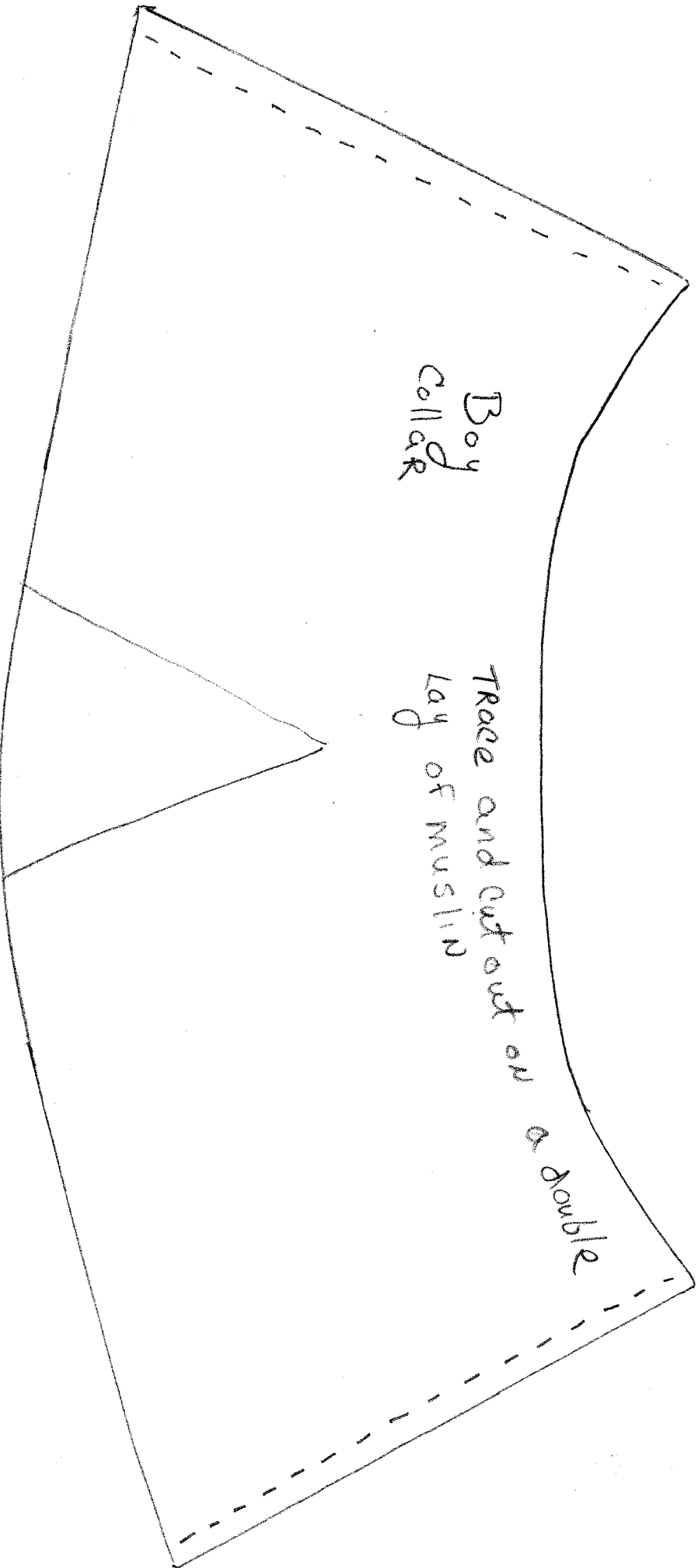
Trace on a double layer of muslin







Bean Bag



Boy
Collar

Trace and cut out on
a double
lay of muslin